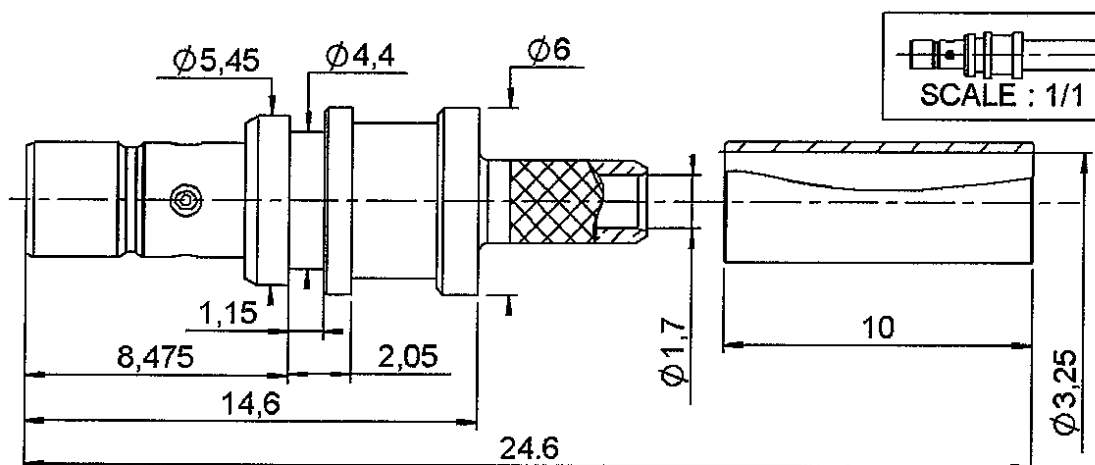


## STRAIGHT JACK CRIMP TYPE

CABLE 2.6/50 S

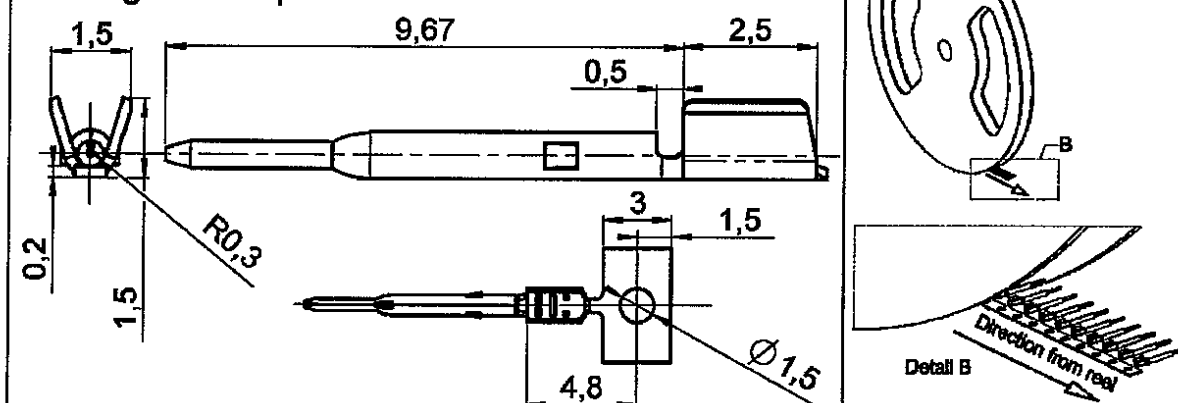
**R114.242.375**

Series : SMB CARLOCK



**Stamped and formed center contact to be ordered  
and delivered separately P/N 250.56.172**

- Tape & reel packaging by 10000
- Diameter of the reel: 600 mm
- Pitch between contacts: 5 mm
- Plating for contact area :Gold 0.5 over Nickel2
- Plating for crimp area :Tin 1 over Nickel 2



All dimensions are in mm.



COMPONENTS	MATERIALS	PLATINGS (µm)
BODY	BRASS	NICKEL 2
CENTER CONTACT	BRONZE	SELECTIVE GOLD+ SELECTIVE TIN
OUTER CONTACT	-	-
INSULATOR	TPX	-
GASKET	-	-
OTHERS PARTS	BRONZE,BRASS	NICKEL 2
-	-	-
-	-	-

Issue : 0646 A

In the effort to improve our products, we reserve the right to make changes judged to be necessary.



**STRAIGHT JACK CRIMP TYPE****CABLE 2.6/50 S****R114.242.375****Series : SMB CARLOCK****PACKAGING**

Standard	Unit	Other
<b>100</b>	<b>'W' option</b>	<b>Contact us</b>

**ELECTRICAL CHARACTERISTICS**

Impedance	<b>50</b>	$\Omega$
Frequency	<b>0-4</b>	GHz
VSWR	<b>1.27 + 0,0000</b>	x F(GHz) Maxi
Insertion loss	<b>0.25</b>	$\sqrt{F}(\text{GHz})$ dB Maxi
RF leakage	- ( <b>NA</b> )	- F(GHz)) dB Maxi
Voltage rating	<b>330</b>	Veff Maxi
Dielectric withstanding voltage	<b>1000</b>	Veff mini
Insulation resistance	<b>1000</b>	M $\Omega$ mini

**MECHANICAL CHARACTERISTICS**

Center contact retention	
Axial force – Mating end	<b>10</b> N mini
Axial force – Opposite end	<b>10</b> N mini
Torque	<b>NA</b> N.cm mini

Recommended torque	
Mating	<b>NA</b> N.cm
Panel nut	<b>NA</b> N.cm
Clamp nut	<b>NA</b> N.cm
A/F clamp nut	<b>0,0000</b> mm

Mating life	<b>25</b> Cycles mini
Weight	<b>1,7440</b> g

**ENVIRONMENTAL**

Operating temperature	<b>-40/+90*</b> °C
Hermetic seal	<b>NA</b> Atm.cm3/s
Panel leakage	<b>NA</b>

**SPECIFICATION****QS9000****CABLE ASSEMBLY**

Stripping	a	b	c	d	e	f
mm	3,00	5,50	10.5	0,00	7,50	0,00

Assembly instruction : **See Pages 3&4**

Recommended cable(s)  
 RG 174  
 RG 316

Characteristics indicated on this data sheet are those that can be achieved with the highest performance cable. Intrinsic limitations of the cable may diminish the performance of the assembly

Cable retention

- pull off	<b>RG 316</b>	<b>110</b> N mini
	<b>RG174</b>	<b>65</b> N mini
- torque		<b>NA</b> N.cm

**TOOLING**

Part Number	Description	Hexagon
.	.	.
<b>R282.271.000</b>	<b>CRIMPING TOOL</b>	<b>3.25</b>

**OTHERS CHARACTERISTICS**

\* Depends on the cable used.  
 THIS COAX CAN BE USED WITH  
 FAKRA2 JACK HOUSING R197.132.\_90  
 (replaced the \_ by the coding letter)

**Issue : 0646 A**

In the effort to improve our products, we reserve the right to make changes judged to be necessary.



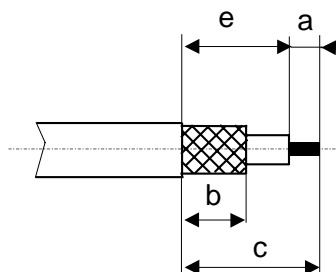
## STRAIGHT JACK CRIMP TYPE

CABLE 2.6/50 S

**R114.242.375**

Series : SMB CARLOCK

# RECOMMENDED MOUNTING PROCEDURE

**1**


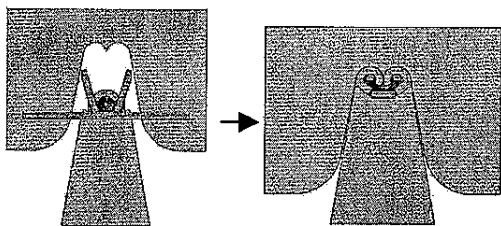
## • Strip the cable

**2**

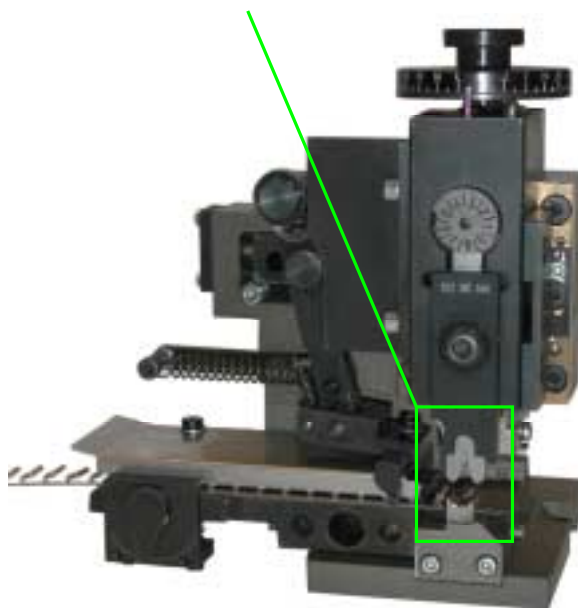
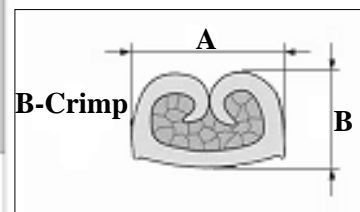
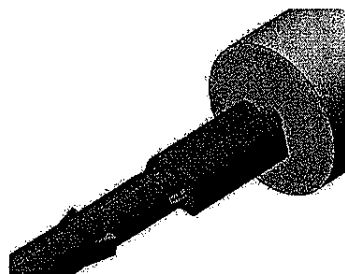
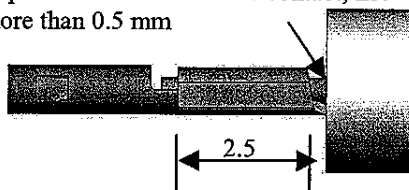
- Crimp the centre contact with crimping dies as described ,using standard mini applicator .

FOR INFORMATION ONLY: we are using a mini applicator from SES SCHLEUNIGER but our contact can be used with any mini applicators

- check the crimping height  $B=0.8 \pm 0.03$  and the crimping width  $A=1 \pm 0.05$  of the center contact.



Dielectric of the cable must be as close as possible from the centre contact, not more than 0.5 mm



Mini applicator

Issue : 0646 A

In the effort to improve our products, we reserve the right to make changes judged to be necessary.



## STRAIGHT JACK CRIMP TYPE

CABLE 2.6/50 S

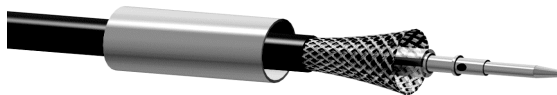
**R114.242.375**

Series : SMB CARLOCK

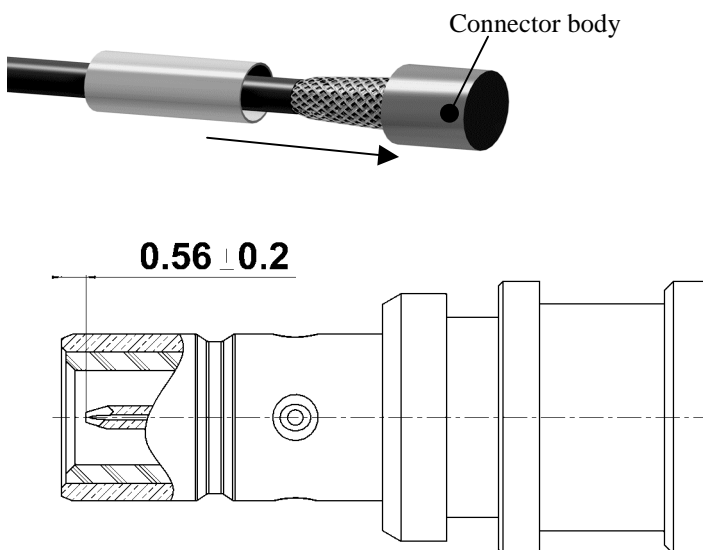
# RECOMMENDED MOUNTING PROCEDURE

**3**

- Slide the ferrule
- Fan the braid


**4**

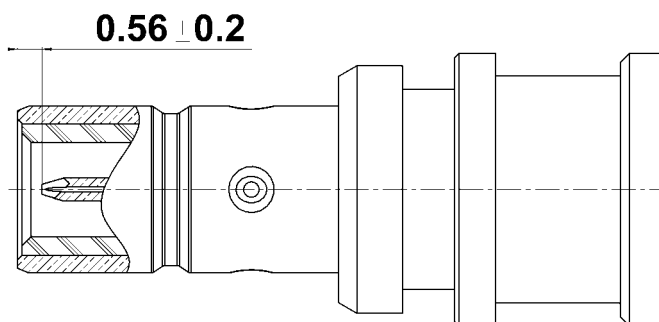
- Slide the cable into the connector body until the center pin reach the dimension  $0.56 \pm 0.2$


**5**

- Slide the ferrule over the braid
- Crimp the ferrule with crimping tool R282.271.000 (Hex:3.25) or crimping tool R282.293.000 (M22520/5-01) + dies R282.235.003 (M22520/5-03)


**6**

- Check the position of the center contact between the top of the body and the top of the center contact :  $0.56 \pm 0.2$ .



Issue : 0646 A

In the effort to improve our products, we reserve the right to make changes judged to be necessary.

